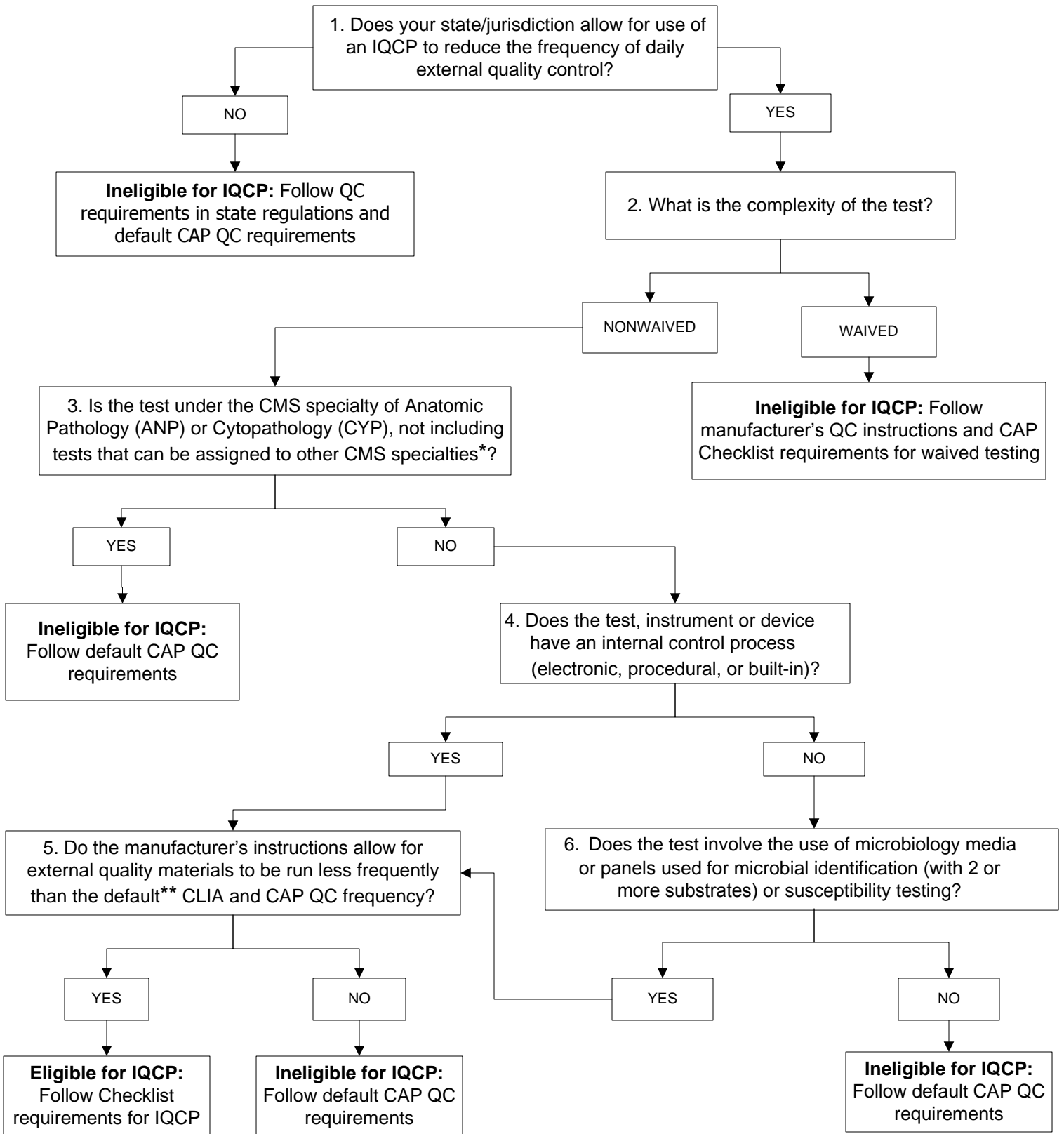




### Eligibility Determination for Individualized Quality Control Plan (IQCP) Option



\* ANP or CYP tests are ineligible for IQCP unless the testing can be billed under another CMS specialty, eg, FISH testing may be assigned to Cyto genetics.

\*\* The default CAP QC frequency for external quality control materials is as follows:

1. Quantitative tests - two controls at different concentrations each day of patient testing, except for Coagulation tests (two levels every eight hours) and Blood Gas testing (one level every eight hours).
2. Qualitative tests – positive and negative controls each day of patient testing.