



# Utilization of Telepathology Technology in CT-guided Biopsy Specimen Evaluation

Amy Deeken, M.D.

Mark Nelson, D.O.

Cherie Hart-Spicer, M.D.



# Study objectives

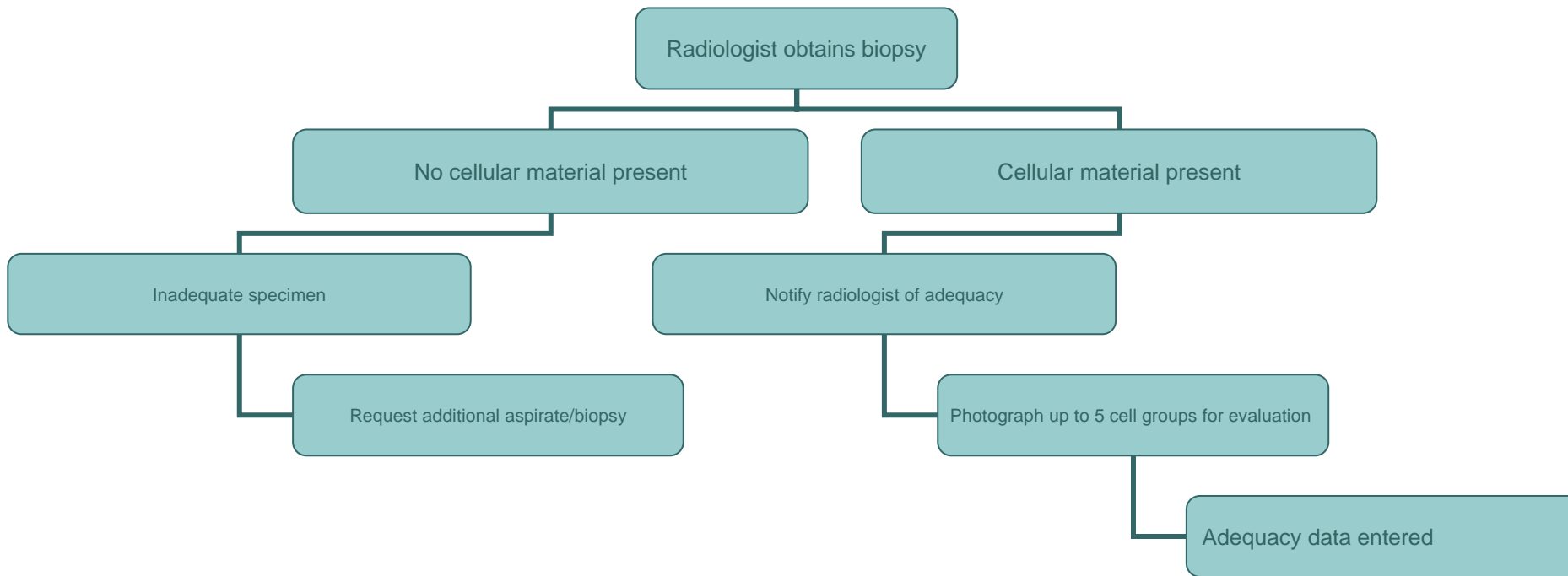
- Evaluate the utilization of telepathology technology for FNA cytology specimens
  - Adequacy evaluation
  - Diagnosis
  - Feasibility in real time situations
  - Educational tool
  - Minimal data set



# Current Practice

- Radiologist obtains specimen
- Residents and cytotechnologists prepare the smears and deliver adequacy determination to the radiologist.
- Attending pathologists review the slides and confirm adequacy statement

# Resident and Cytotechnologist Participation





# Attending Pathologist Participation

- Resident or cytotechnologist will notify via phone of FNA images to view
- Record impression of adequacy and preliminary diagnosis in the spreadsheet
- Review glass slides following FNA and record any discrepancy or change in diagnostic impression in spreadsheet



# Following Data Collection

- Correlation with final diagnosis of the case and any discrepancy noted.
- All participants will fill out a questionnaire with their evaluation of the technology and comments.